



enirrac reports

CITY PROFILE SERIES

City Profile – Cuttack

Comprehensive Industry Overview of the City, PEST Analysis & Analysis of Key Industries Including Ferrous Alloys, Steel, Food & Allied, Chemical & Allied, Engineering & Metal Based, Forest & Wood, Textiles, Paper & Paper Products, Real Estate & Construction

June 2021 | \$ 250

Investor's Pilot Post COVID 19



Industry Cluster



Cuttack City – Brief Overview

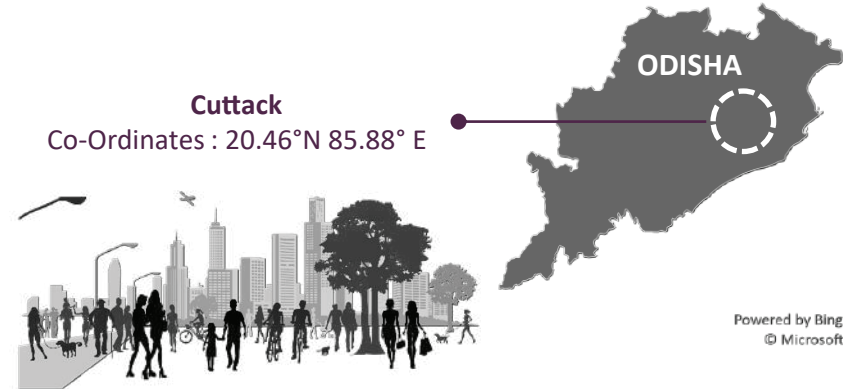
Cuttack, which lends its name to the District, is also known as the business capital of Odisha. The word Cuttack derives its name from the anglicized Sanskrit word Kataka, which has two meanings-one being military camp and the other being the seat of government, protected by the army. This city takes pride in the fact that it had been the capital of Odisha, before its shifting to Bhubaneswar, the new capital.

Cuttack is believed to have the largest GDP among all cities in Odisha due to its large business houses and a wide range of industries ranging from ferrous alloys, steel and logistics to agriculture and traditional industries like textiles and handicrafts. There are many trading houses in the city renowned nationally and internationally. The Paradip Port which is around 85 km from the city facilitates this process. Proximity to the capital city, Bhubaneswar, and existing multi-modal connectivity, has made **Cuttack** one of the most preferred investment destinations in the State in recent times. Blessed to be on the banks of Mahanadi (*the center of Odisha's Industrial Growth*), Cuttack can become a 'Next - Best' City for Global Industrial Re-shoring in India.

Major Industries Include – Including Ferrous Alloys, Steel, Food & Allied, Chemical & Allied, Engineering & Metal Based, Forest & Wood, Textiles, Paper & Paper Products



Cuttack City – Key Statistics

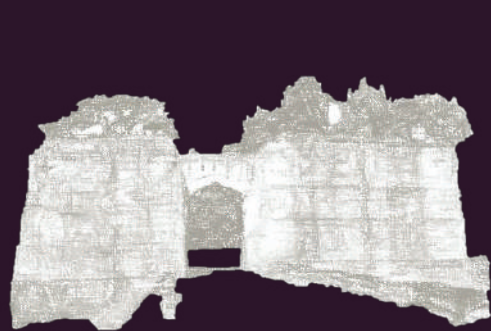


Cuttack – Quick Preview

Area	398 sq. km
Population	606,007 (as per Census 2011)
Literacy Rate	92.32%
Average Annual Rainfall	1515 mm
STD Code	0671
Popularly Known As	Business Capital of Odisha

Source: eninrac research

Cuttack – City Snapshots



398 sq. km
Area of the City

0.60 Mn.
Population

Key Transportation Infrastructure



Airport – 01*

Railway Stations - 01

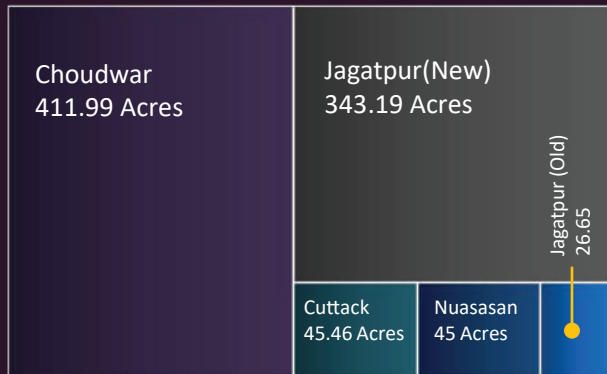
National, State, Main District Highway - 392 Kms

**the city of Cuttack is being served by Biju Patnaik International Airport, Bhubhaneshwar*

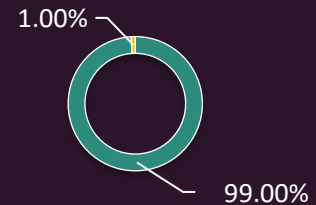
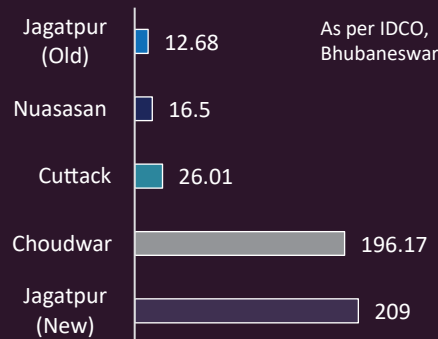
Port – 01~

~ the Paradip Port which is around 85 km from the city facilitates the city

Key Industrial Estates – Total Land Area in Acres



Total Land Area Allotted – in Acres



Rest of Industrial Units
Large & Medium Units

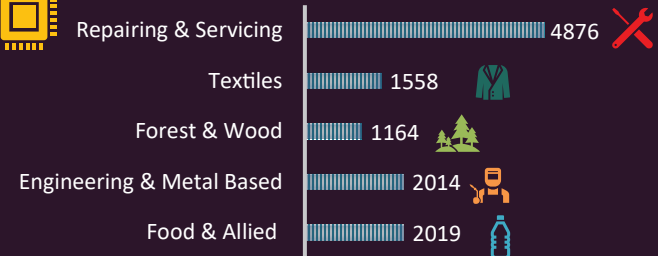
Select Large Scale Industries & PSU's in City



Potential for new MSME's include agro-servicing, tyre resoling, fabrication & mechanical spares, ferric alum, industrial gas, refractories, hydrated lime, lead acid storage battery manufacturing, insulator manufacturing, paddy processing, spice grinding, chrome ore processing, hatchery units, stone carving etc.



Key MSME Industrial Units in Numbers





-
- The city profiling helps to analyse comprehensive political scenario of the city including Political Stability, Trade & Fiscal Policies, Trade Agreements, Ease of doing Business etc.;
 - City profiling shall augment the understanding of the Economic scenario of the city including FDI Inflows & Potential, GDP Growth rate, Employment Rate and Structure etc.;
 - The city profile demystifies Social Environment & gives Technological Overview of the city including status of public infrastructure, mass transit systems, railway/airport infrastructure, smart city indexation, SEZs, hospitality index, health infra etc.;
 - City profiles projects detailed analysis for existing MNCs, PSUs, CPSUs, Private Companies, noteworthy Start-Ups & Regional Growth Leaders companies with comprehensive input upon potential investment industries
 - The city profiling examines explore fresh investment opportunities across a city and draws an investment benchmark with other potential cities on regional, state and national levels;



REPORT INSIGHTS

- Understanding basic facts of Cuttack city like area, overall population, industrial clusters etc.;
- Understanding Political Scenario for the city including government sanctions, tax regime, government support/incentives etc.
- Understanding Economic Trends & Outlook which covers various aspects like industrial licensing, rate of urbanisation, economic growth etc.;
- Unravelling Social Environment for the city including population spread, literacy rate, status of training and skill development centers/institutes etc. ;
- Analysing Technological & Infrastructural growth of the city;
- Detailed Profiling of Key Companies already invested/plans to invest in the city;
- Identifying potential sectors/industries for investments in near future;



KEY HIGHLIGHTS

- Examining basic facts like area, overall population, industrial clusters etc. for Cuttack city;
- Examining Political Scenario for Cuttack city;
- Examining Economic Scenario for Cuttack city;
- Examining Social Scenario for Cuttack city;
- Examining Technological & Infrastructural aspects for Cuttack city;
- Examining profiles for key industries invested in Cuttack city;
- Coming up with Overall Attractiveness of Cuttack City with the help of “Investment Index Benchmark” on regional, state and national level;



MUST BUY FOR

- Private Industrial Conglomerates;
- Public Industrial Conglomerates;
- MSME Industries;
- Multinational Companies;
- National Level Private Companies;
- State Level Private Companies;
- Regional Growth Leaders;
- Start-Ups;
- Financial Institutions;
- Private Project Developers;
- EPC Service Providers;
- Turnkey Solution Providers;
- Project Financing Agencies;
- Industry Associations;
- Technical Consulting Groups;
- Project Consultants;
- Research Agencies;
- Urban Local Bodies;



Augmenting Value to Your Business

enirac reports



CONTENTS & COVERAGE

1. City Facts - Cuttack
 - A. Area
 - B. Overall Population
 - C. Industrial Clusters
 - D. Economic Zones
 - E. Benefits at State level
 - F. Infrastructure – Ports, Airports, Rail Infra, Road Infra
2. Political Analysis
 - A. Political Stability/Instability
 - B. Level of Corruption
 - C. Legality of Lobbying
 - D. Fiscal (tax) Policies
 - E. Trade Policies (Duties/Tariffs)
 - F. Regulation/Deregulation
 - G. Trade Agreements
 - H. Government Sanctions
3. Economic Analysis
 - A. Industrial Licensing
 - B. FDI Track and Potential
 - C. Real GDP Growth
 - D. Economic Growth Mapping
 - E. Employment Rate and Structure
 - F. New Developments and Investment
 - G. Key Industries to retain Support Map
 - H. Rate of Urbanization
4. Social Analysis
 - A. Population Spread
 - B. Literacy Rate
 - C. Main universities/Colleges
 - D. Training and Skill Development Institution
 - E. Health Infra and Facilities
 - F. Hospitality Index
5. Technology and Infrastructure
 - A. Public Transport
 - B. Mass Transit Systems
 - C. Airports
 - D. Railway Station/Infra
 - E. Ports
 - F. Road Infra
 - G. PPP Projects and Real Estate
 - H. Electric Power Demand/Supply
 - I. Power Distribution Tariffs
 - J. Power Transmission Infra
 - K. Fortune 500 companies
 - L. Regional Growth Companies
 - M. Smart City Index
 - N. Office Spaces & Rents
 - O. Special Economic Zones
 - P. Key Industrial Clusters
 - i. By Type
 - ii. By Size





CONTENTS & COVERAGE

- Q. MSMEs and Start-Up's Growth
- R. Warehouse and Cold Storage
- S. Logistics Support

6. Key Companies

- A. MNC's
- B. PSU/CPSU
- C. National Level Private Companies
- D. State Level Private Companies
- E. Regional Growth Leaders
- F. Noteworthy Start-Ups

7. Investment Index Benchmark – Self Reliant Cuttack

- A. Regional Level
- B. State Level
- C. National Level



Augmenting Value to Your Business

enirac reports



For those who are lost, there will always be cities that feel like home.

- Simon Van Booy



CITY PROFILES

Become a Client | Contact Us | **RAC**eninrac

vantedge+

MRAC+

OCORE+

Contact – Head Office

Address : 5th floor, Caddie Commercial Tower, Aerocity (DIAL), New Delhi - 110037

Contact – NCR Office

Address : 7th Floor, I-Thum Towers, Noida, NCR Region, Uttar Pradesh, India

Contact – Mumbai Office

Address : 4th Floor Duru House, Juhu, Opposite JW Marriott, Mumbai, Maharashtra



connect@eninrac.com



+91 120 4147 000



www.eninrac.com